



Jan. 22, 2026

# Sealy Relief Route Feasibility Study

**Austin County, Texas**  
**CSJ: 0187-03-085**

Virtual Public Meeting with In-Person Option

## Drive Like A Texan



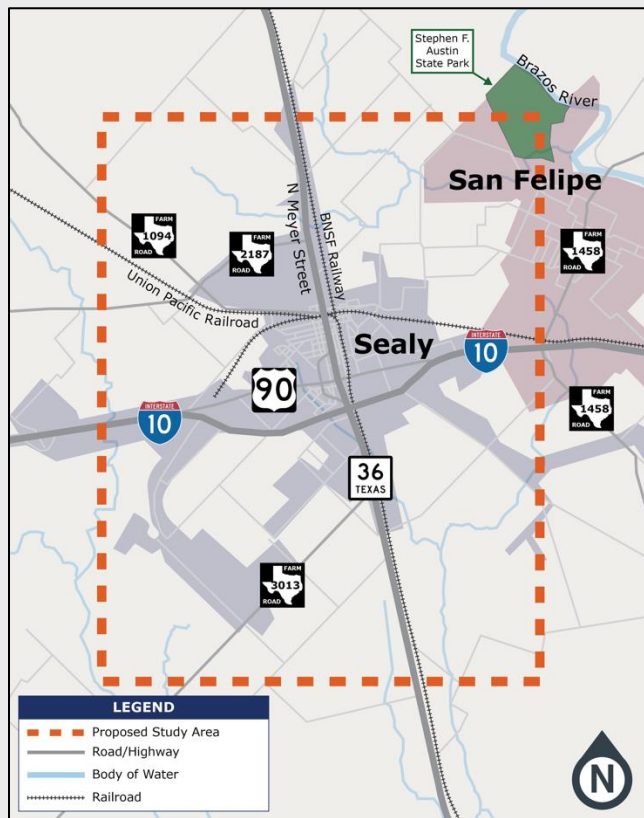
## Table of Contents

<b>4</b>	Study Location & Overview	<b>16</b>	Project Development Process
<b>5</b>	Existing Roadway Characteristics	<b>17</b>	Feasibility Study Process
<b>6</b>	Crash Data	<b>18</b>	Public Feedback
<b>10</b>	Ultimate Roadway Typical Section	<b>19</b>	How to Provide Comments
<b>11</b>	Environmental Constraints	<b>20</b>	Learn More

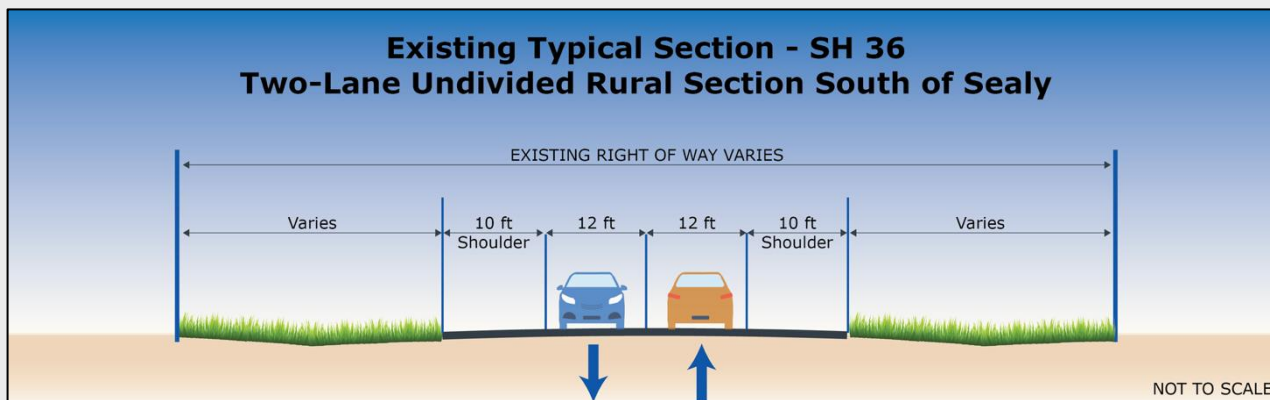
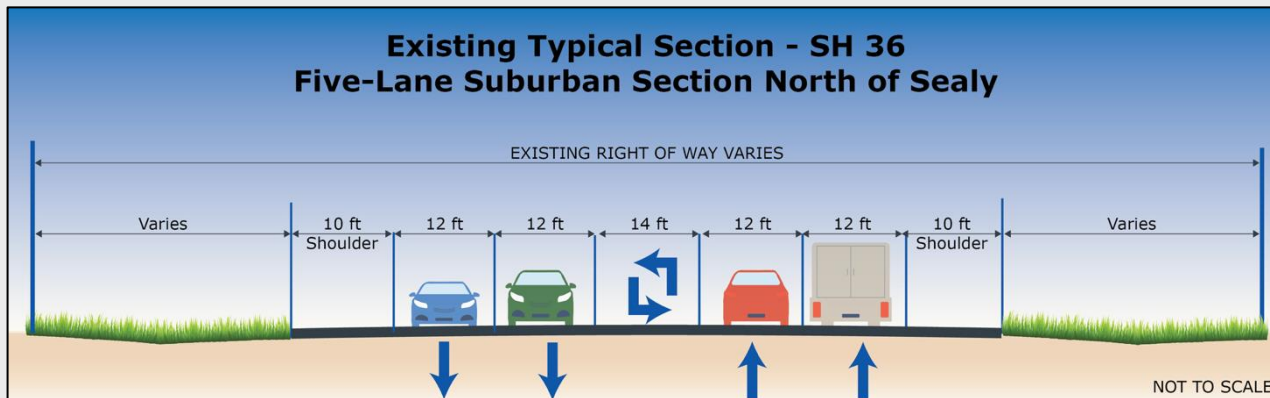
## Study Location and Overview

TxDOT is conducting a feasibility study to explore a potential relief route around the City of Sealy.

The purpose of the relief route is to help reduce congestion, while also improving safety and mobility.



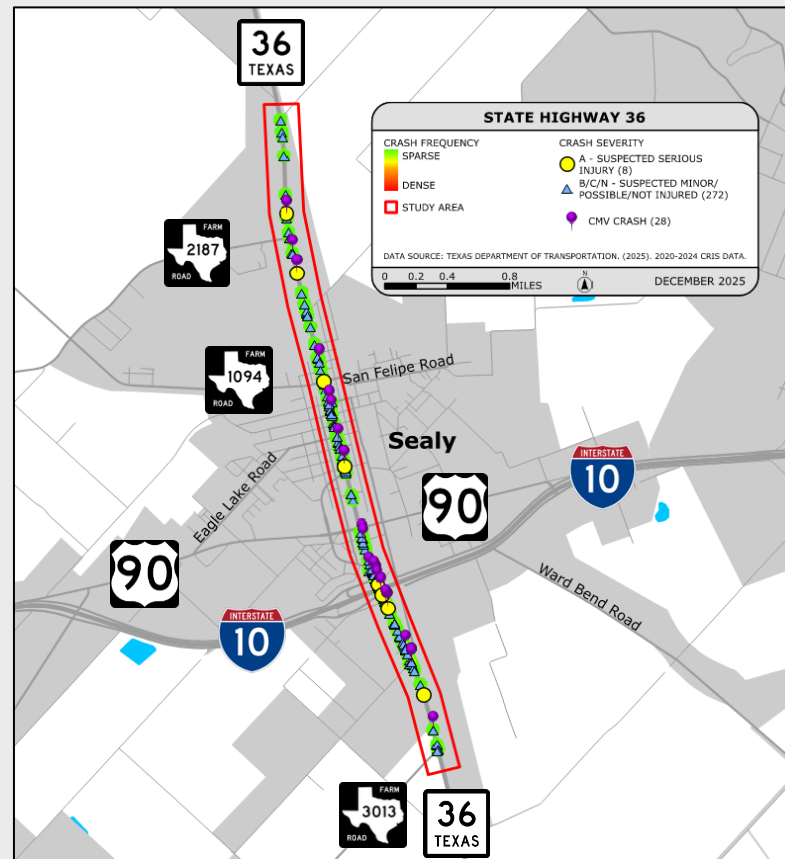
## Existing Roadway Characteristics



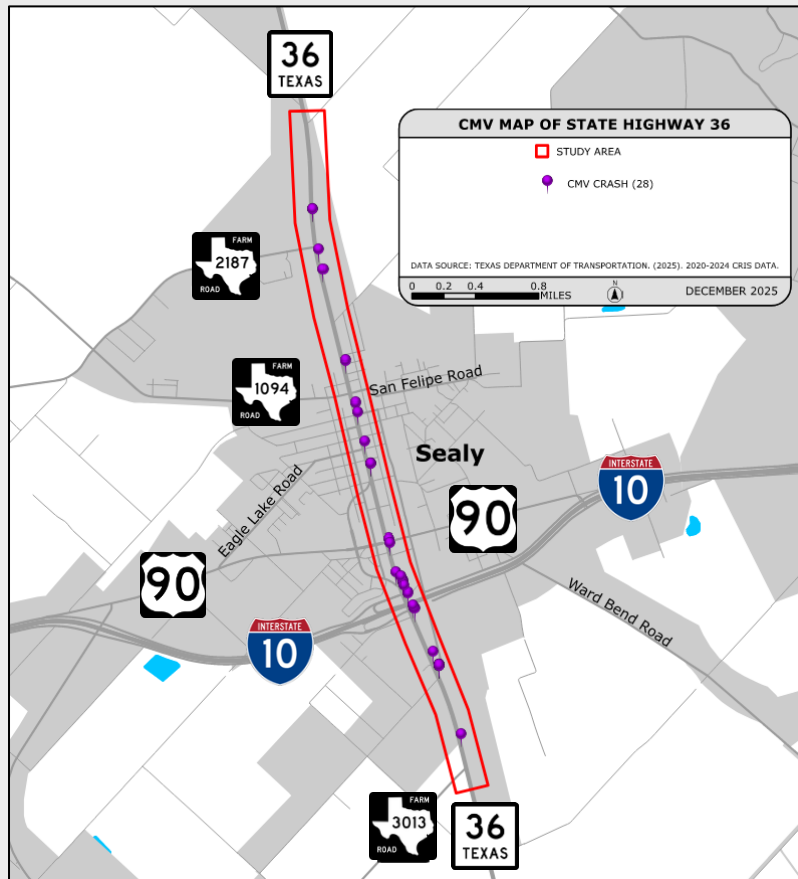
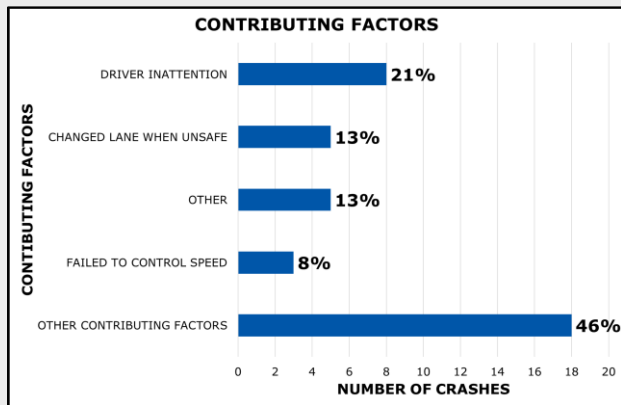
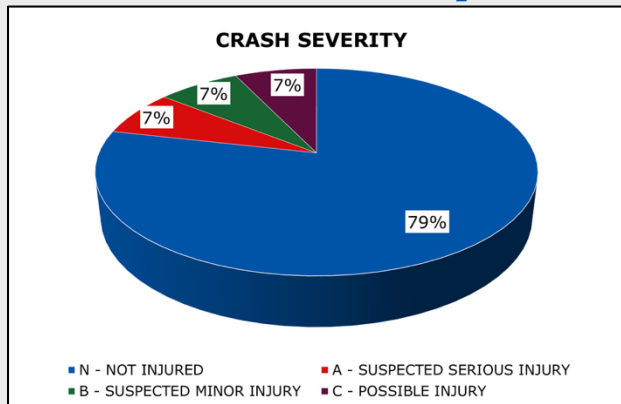
## Crash Summary

- 280 crashes
- No fatal crashes
- 8 suspected serious injury crashes
- 28 involved commercial motor vehicles (CMV)

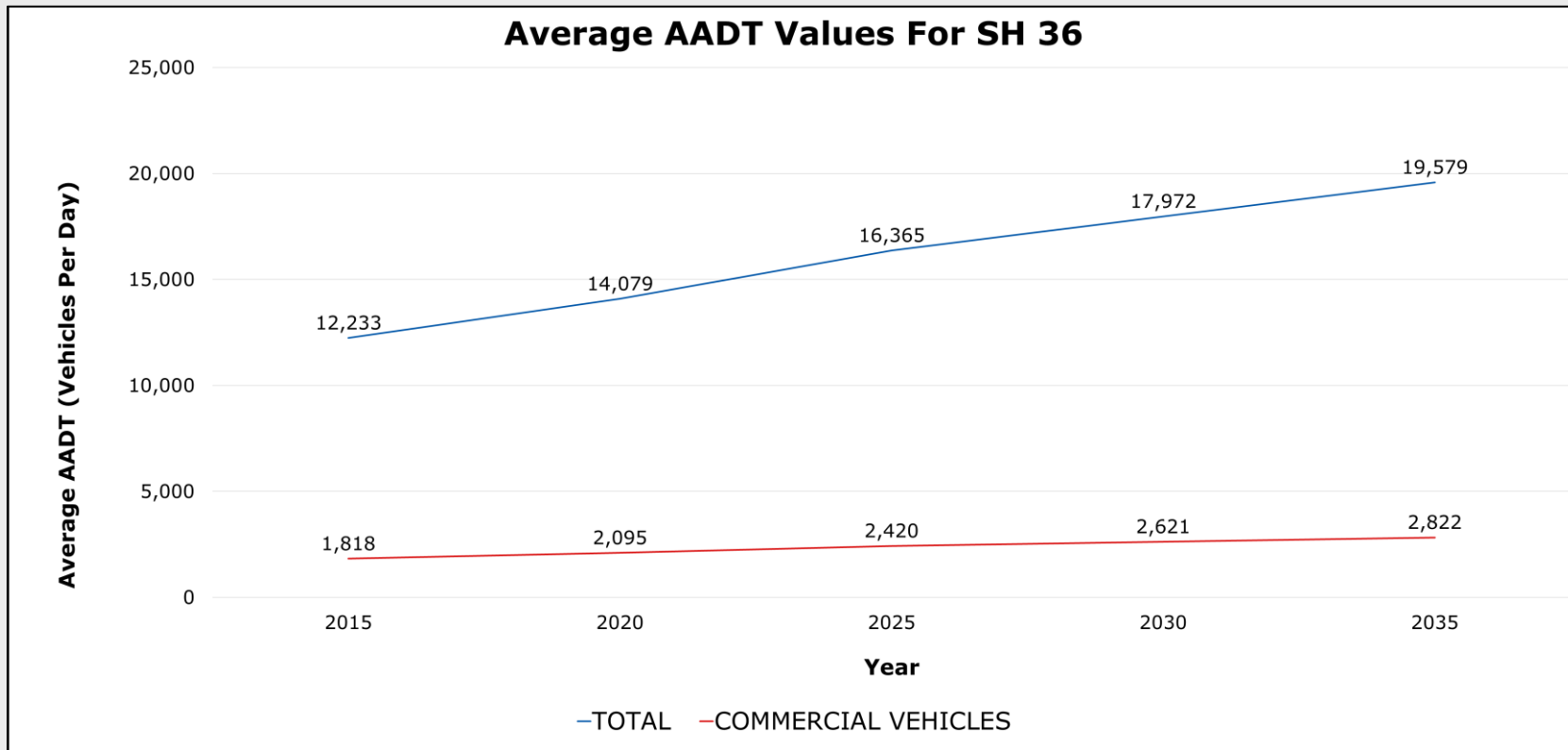
Data from 2020 to 2024



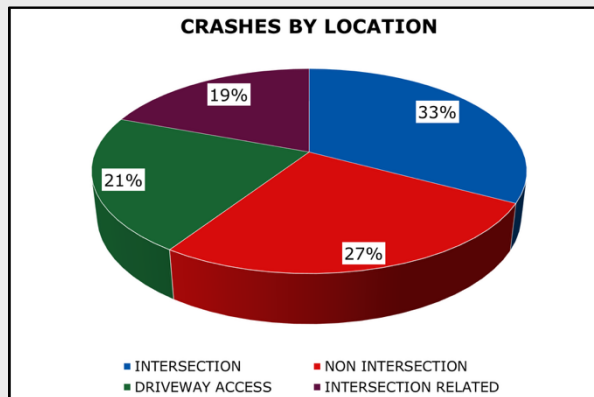
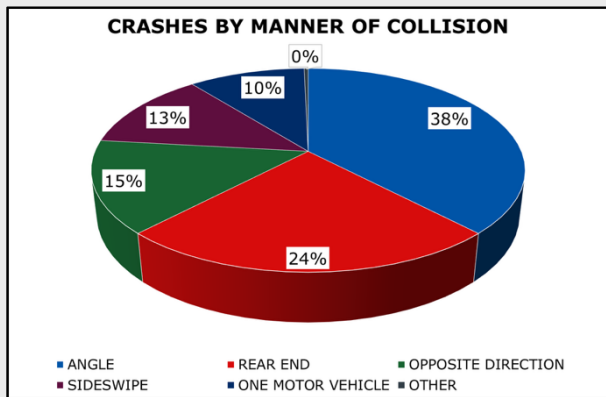
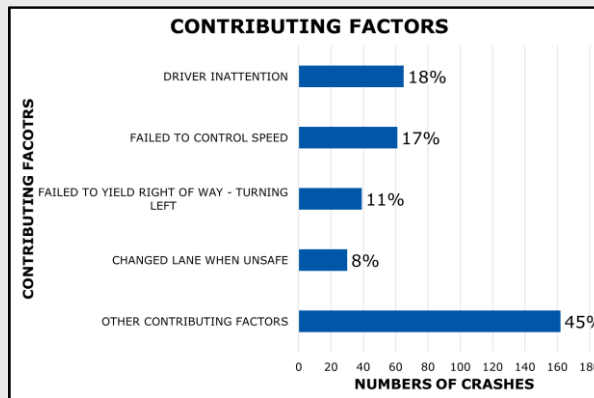
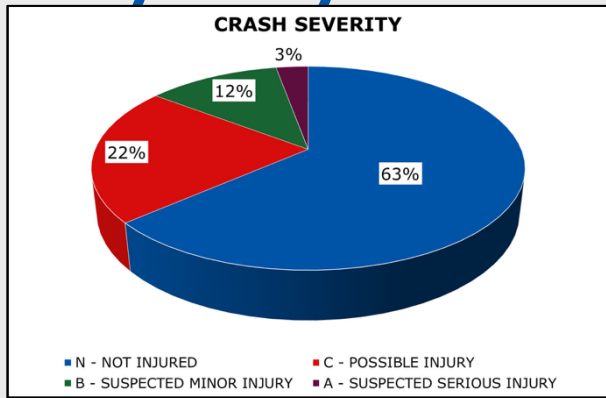
# Crash Summary - CMV



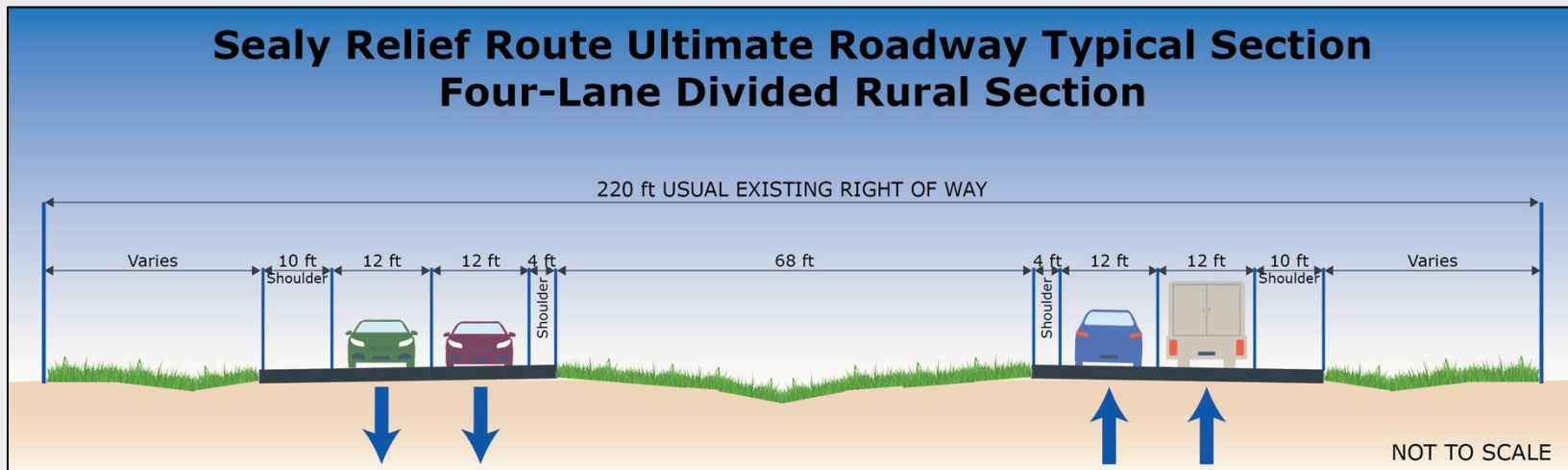
# AADT



# Safety Analysis – Summary Charts



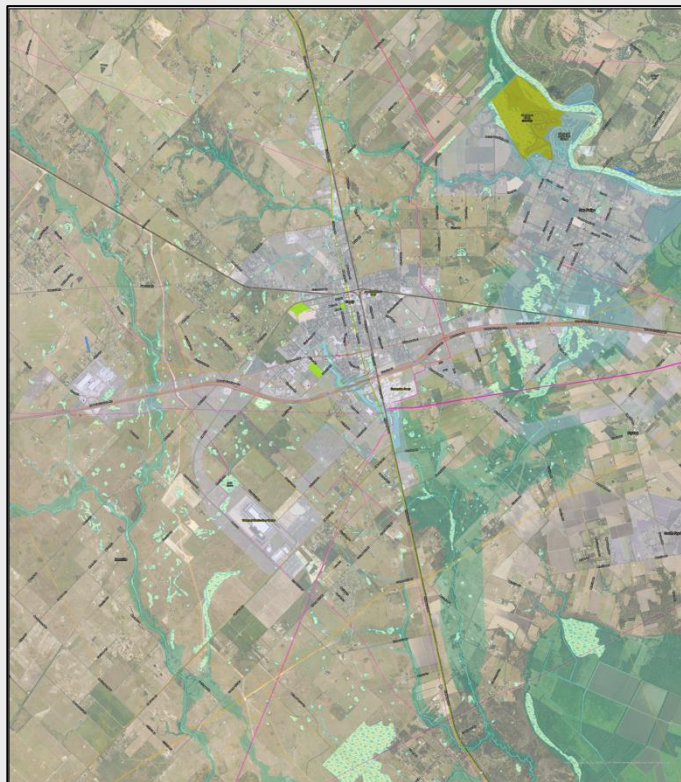
## Ultimate Roadway Typical Section



An ultimate roadway typical section would include two 12-foot lanes in each direction with 10-foot outside shoulders and 4-foot inside shoulders. It would also include a depressed grassy median.

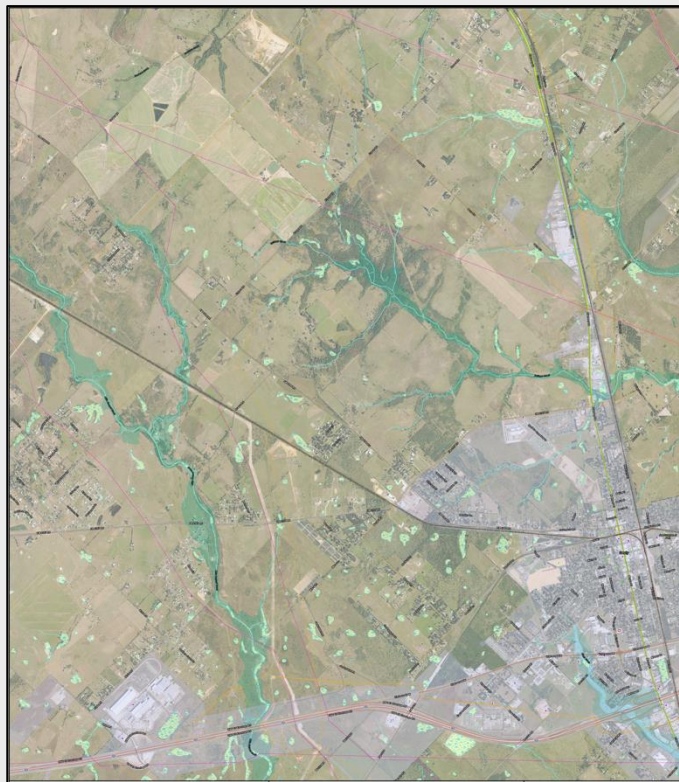
## Study Area Environmental Constraints

- In addition to safety analyses, TxDOT considers environmental features such as biological resources, water resources, historical resources, and community resources when developing solutions.
- This environmental constraints map shows the full study area.



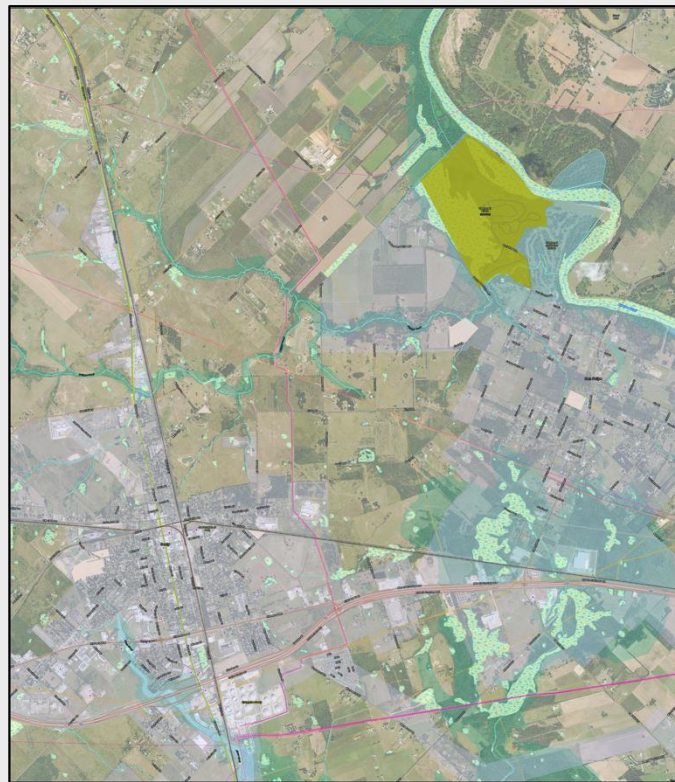
## Study Area Environmental Constraints - Northwest

- This environmental constraints map shows a close-up view of the northwest quadrant of the study area.



## Study Area Environmental Constraints - Northeast

- This environmental constraints map shows a close-up view of the northeast quadrant of the study area.



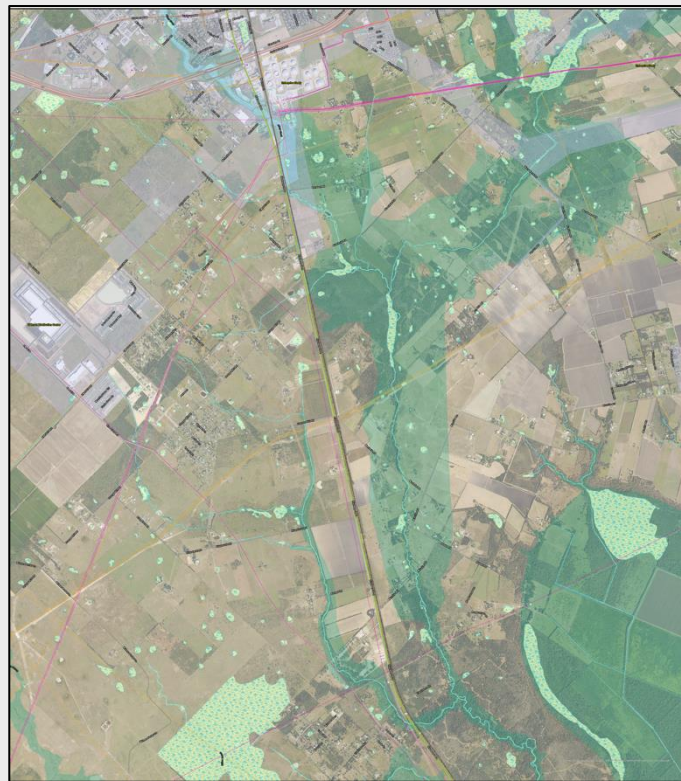
## Study Area Environmental Constraints - Southwest

- This environmental constraints map shows a close-up view of the southwest quadrant of the study area.

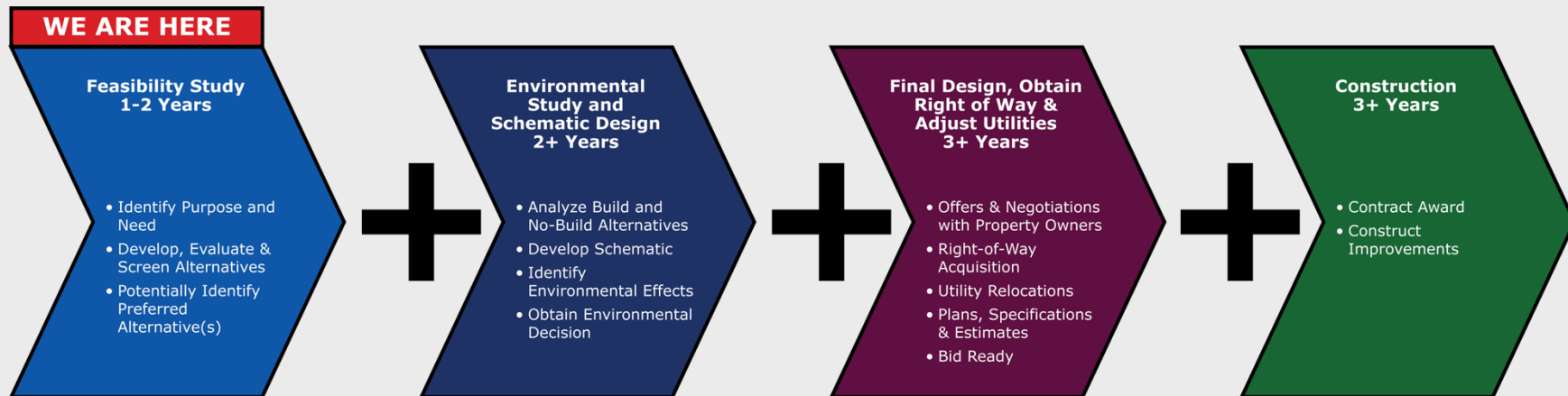


## Study Area Environmental Constraints - Southeast

- This environmental constraints map shows a close-up view of the southeast quadrant of the study area.



# Project Development Process



This timeline includes many variables which are subject to change.

Ongoing Public Involvement and Meeting Opportunities

## Feasibility Study Process



This schedule is preliminary and subject to change.

## Your feedback helps develop solutions

- What would you consider a priority that a potential relief route should address?
- Are there any local community impacts of which TxDOT should be aware of as they continue the feasibility study that are not currently identified on the environmental constraint maps?
- How do you think transportation needs in this area may change over the next 10 to 20 years?
- What other important information would you like the project team to know?

## How to Provide Comments

Your comments and questions are welcome. To submit a comment, please use one of the options below.



### Comment Form

Submit a comment form at the in-person meeting.



### Email

Jonathan.Rogers@txdot.gov



### Mail

TxDOT Yoakum District  
ATTN: Jonathan Rogers  
403 Huck St.  
Yoakum, TX 77995



### Online Form

Visit [www.txdot.gov](http://www.txdot.gov),  
keyword search  
"Sealy Relief Route"  
and complete the  
online comment form.

*Comments must be received or postmarked by **Friday, Feb. 6, 2026**, to be included in the official public meeting summary.*

## Learn More



For more information about this project, please scan the QR code above or visit [www.txdot.gov](http://www.txdot.gov), keyword search "Sealy Relief Route."

# Thank You!