

Brownsville, TX

Texas Border Facts

Fall 2018



Customs Port - Brownsville



Veterans International Bridge at Los Tomates Port-of-Entry (POE)

There are four border crossings in the Brownsville region that allow the cross-border movement of privately operated vehicles, pedestrians, buses, commercial trucks, or rail cars. Each of these bridges connect Brownsville to its sister city, Matamoros, in the Mexican state of Tamaulipas.

Veterans International Bridge at Los Tomates

Open since 1999, Veterans International Bridge at Los Tomates is the primary commercial vehicle crossing in the Brownsville region, processing all northbound trucks. The bridge is part of a designated "heavy truck corridor" that allows permitted, overweight trucks to travel between Mexico and the Port of Brownsville. The bridge also serves privately operated vehicles, buses, and pedestrians.

Gateway International Bridge

The Gateway International Bridge serves all southbound commercial vehicles and privately operated vehicles, as well as pedestrians, travel in both directions. The Gateway International Bridge is also a segment of the "heavy truck corridor" for southbound commercial vehicles.

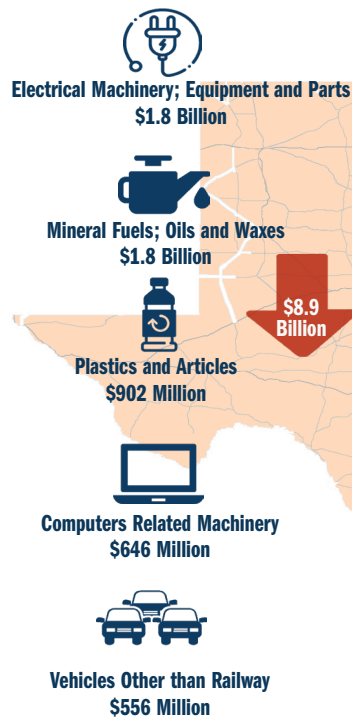
Brownsville & Matamoros (B&M) Bridge

The B&M Bridge is the only privately owned crossing in the Brownsville region. Since 1999, the bridge no longer handles commercial traffic but serves privately operated vehicles and pedestrians. Its adjacent rail bridge ceased handling rail cars in 2015.

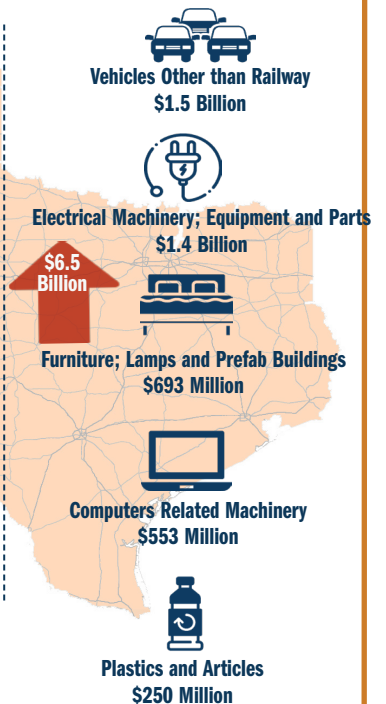
Brownsville West Rail Bridge

When it opened in 2015, the Brownsville West Rail Bridge was the first new rail crossing on the Rio Grande River in more than 100 years. The crossing was built on the western side of Brownsville and Matamoros to reduce the number of at-grade crossings within both cities. The Brownsville West Rail Bridge is the only rail crossing serving the Lower Rio Grande Valley region.

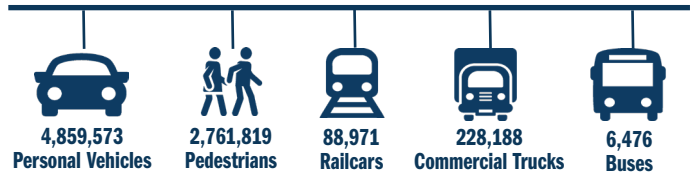
2017 Top 5 Exports



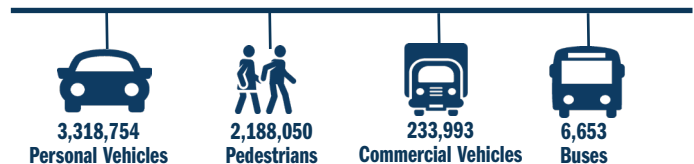
2017 Top 5 Imports



2017 Northbound Crossings



2017 Southbound Crossings

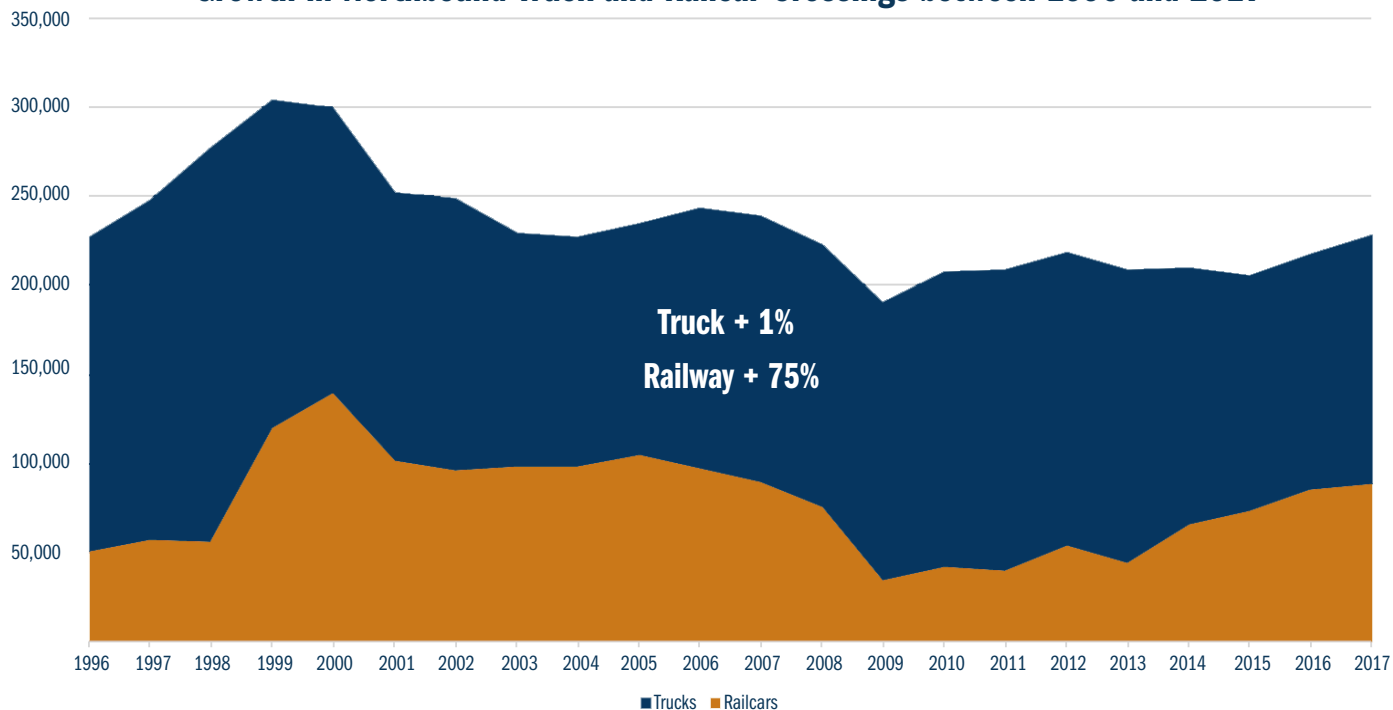


Southbound railcar counts not available.

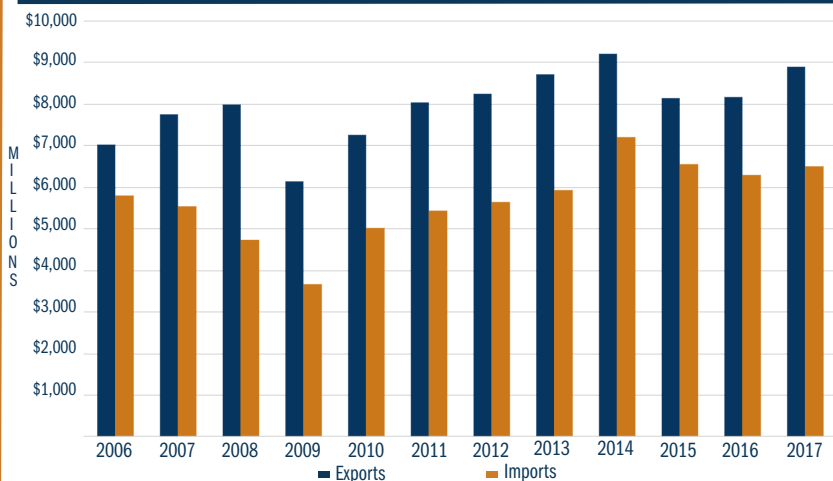
Traffic counts do not include southbound crossings at the B&M Bridge.

Brownsville, Texas

Growth in Northbound Truck and Railcar Crossings between 1996 and 2017



In 2017, total U.S.-Mexico trade was valued at \$557 billion. Of that amount, \$336 billion worth of trade crossed at the Texas-Mexico border. Within the Brownsville region, \$15.4 billion of goods crossed the Texas-Mexico border, with exports surpassing imports over the past ten years. One-fifth of the region's binational trade (exports and imports) consisted of electrical machinery, equipment, and parts. Other important export commodities were fuels; plastics; computer related machinery and parts; and automobiles and parts. Key import commodities were automobiles and parts; furniture; computer related machinery and parts, and plastics.



2017 Cross-Border Trade by Surface Transportation Mode



5% of Imports

6% of Exports

11% of Exports were by Pipeline. 4% of exports and 1% of imports were by air. 2% of exports were by vessel.

Maintaining and expanding trade with Mexico is critical to the United States's current and long-term economic prosperity. Texas's trade transportation system has an essential role in maintaining the efficient flow of goods between the two nations. Texas's Border Trade Advisory Committee, in conjunction with the Texas Department of Transportation (TxDOT), is providing the state's elected officials with information and insight for key policy, planning, and funding decisions to facilitate future binational trade.

